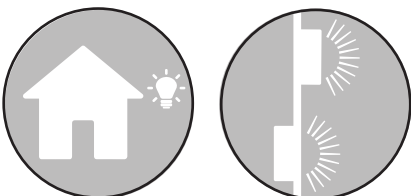
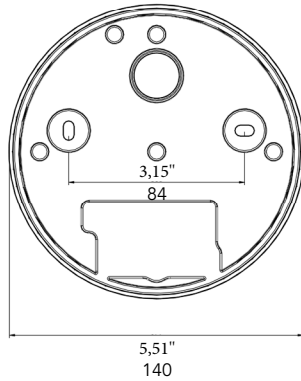


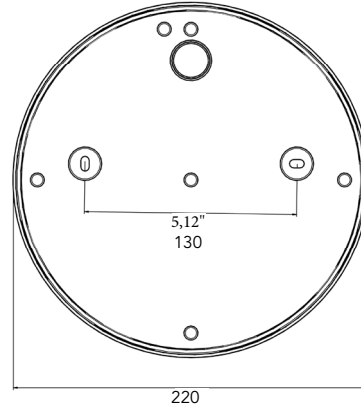
VERSO FLAT



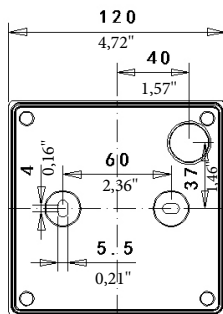
Verso Flat RD



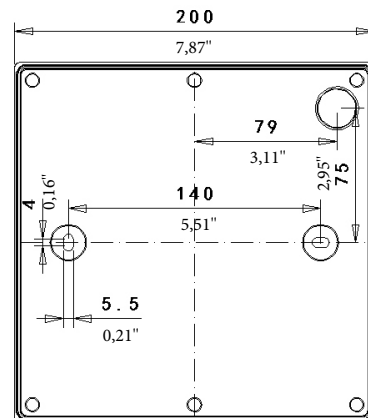
MaxiVerso Flat RD



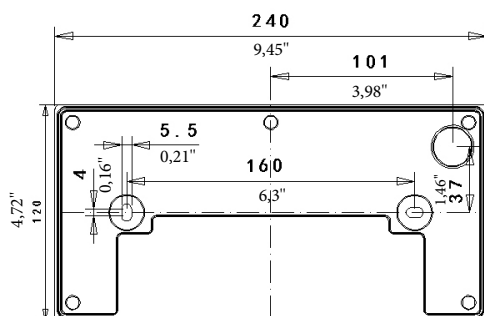
Verso Flat SQ



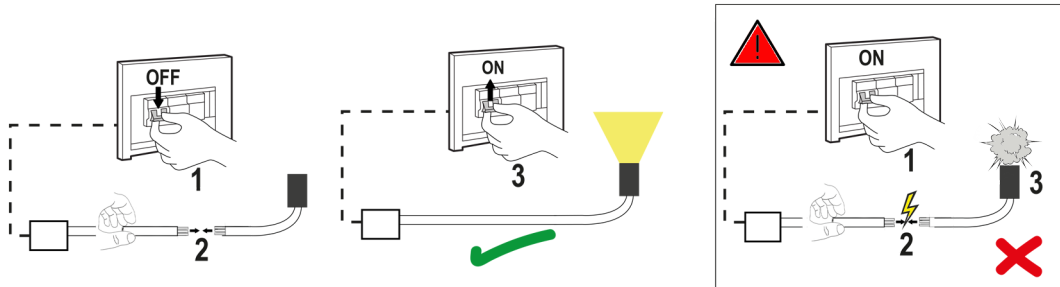
MaxiVerso Flat SQ



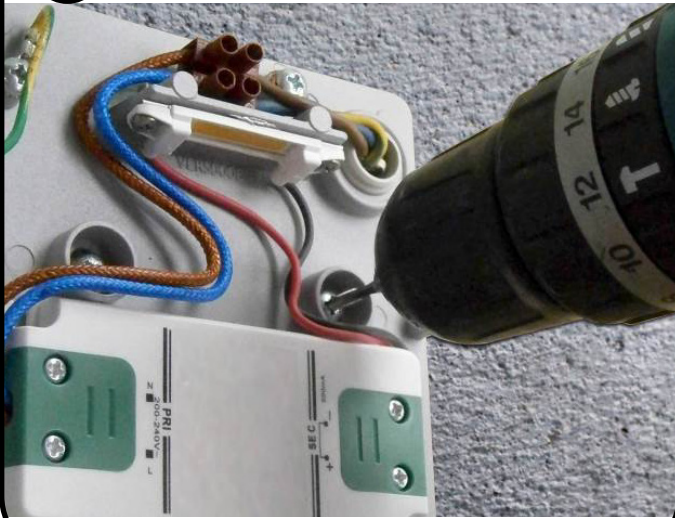
LongVerso Flat SQ



Switch-off the power supply



1



2a - Verso & LongVerso



2b - MaxiVerso



3



4**(EN) WARNING:**

- The safety of this fixture is guaranteed only if you comply with these instructions; remember to keep in a safe place.
- The appliance must not be tampered with or transformed and it must be installed and used as supplied and in compliance with the national rules on installations.
- Switch-off the power supply before carrying out any maintenance operations. hot plug-in is not allowed and may cause damage to the luminaire.
- The light source contained in this luminaire shall be replaced only by the manufacturer or his service agent.
- Installation and service must be performed by qualified service personnel.
- Use the unit only complete with diffuser.
- Any non-compliant installations will invalidate all forms of guarantee.